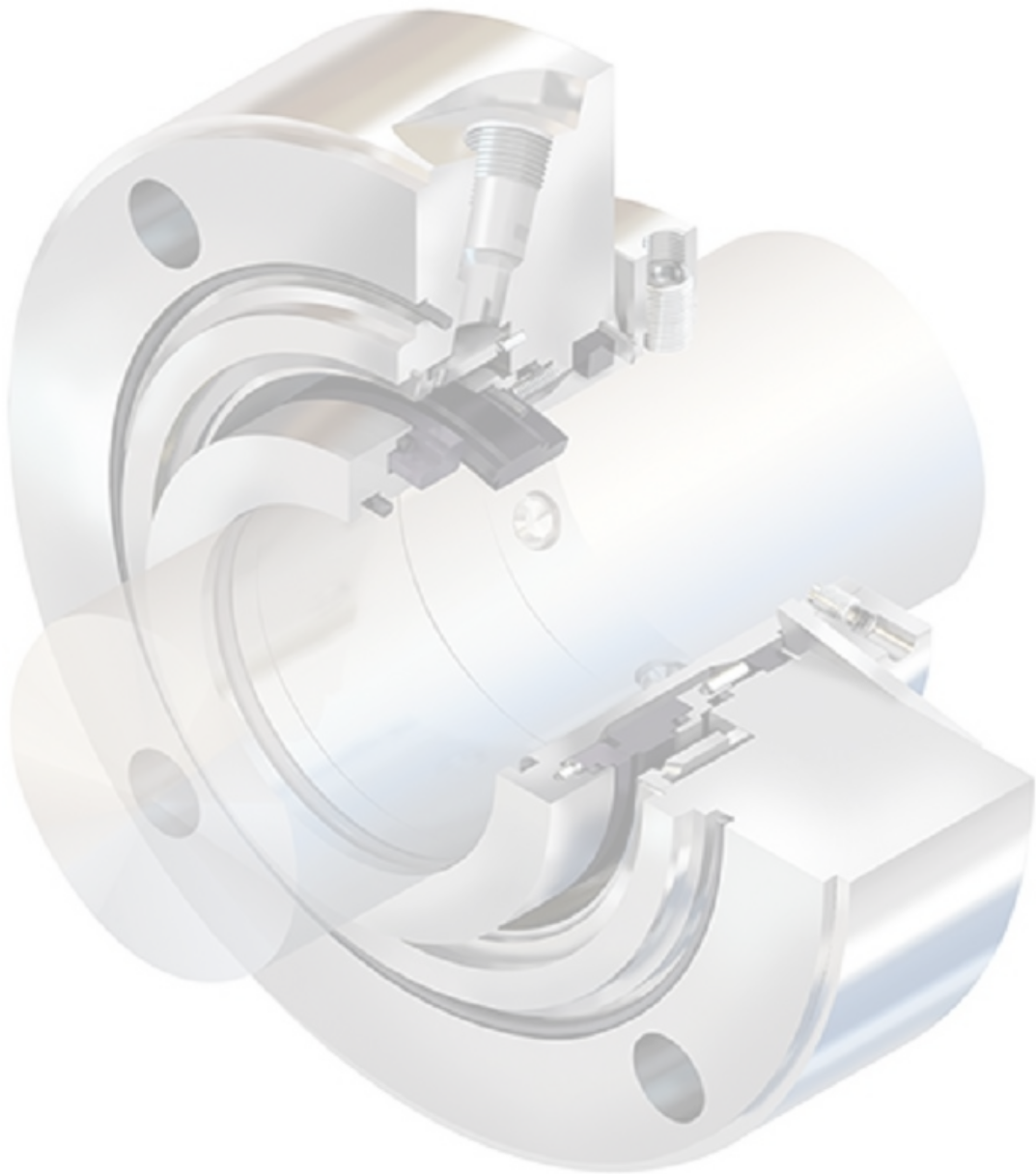




**GERMANN
ENGINEERING**



GERMANN
ENGINEERING





GERMANN ENGINEERING Established in the year 2015, is India's leading manufacturer of Mechanical seals. Our company pioneers in Designing, Manufacturing and Distribution of precision engineered Mechanical seals and sealin systems. We have set bench marks on performance, cost and service in our line of products and sp Our philosophy while attending a seal requirement has been to develop and supply spares for seals giving good performance or Develop alternative Design to enhance seal performance.

We are a company which has been specializing in mechanical shaft seals for nearly 7 years and have many customers around the India, Our mechanical shaft seals sizes range from 10mm to 300mm shaft size and beyond, all produced in the India. As well as manufacturing customized seals for many types of rotating equipment, a large part of our business is repairing almost any item including those from other manufacturers.

If required we offer an on site assessment to assist you with any ongoing sealing issues,

Some of the types of equipment we deal with are

Vertical pumps | Split case pumps Horizontal blenders | Ribbon blenders Z blenders | Apv style pumps Back pull out pumps | Gear pumps Mixers | Agitators | Silo's | Fire systems Effluent systems | Shaft repair

We will repair your existing seal or quote you a replacement seal. Just send a photo.
With over 20 years of experience.

We are Serving to various industries like Chemical, Pharmaceutical, Petrochem, Dairy, Food and Beverages, Sugar Plant, Refineries, Fertilizers, Pulp & Papers, Power Plants etc.

We are also Exporting our Products to Various Countries like UAE, Saudi Arabia, Qatar, Nepal, Ivory coast, Malawi, Mozambique, United Kingdom.

Mechanical Seal Repair specialized in sourcing of genuine replacement mechanical seals from around the world. Representing all of the major mechanical seal manufacturers :

- * John Crane
- * Eagle Burgmann
- * Flexibox
- * Flowserve
- * Chesterton





GRUNDFOS SEAL

Face Materials	Carbon, Ceramic, Silicon Carbide, Tungsten Carbide
Metal Parts	AISI SS 316, AISI SS 304, HASTELLOY-C, ALLOY-20
Seal Elastomer	Viton, EPDM, Nitrile
Applications	Slurry pump, Pulp & paper, Sludge & Syrup pump, Chemical, Petrochemical & Refinery
Operating Limits	Shaft Diameter d1 :12....22mm Pressure p : 05 bar (max) temperature : -45....+180°C

SINGLE CARTRIDGE SEAL

Face Materials	Carbon, Tungsten Carbide, Silicon Carbide
Metal Parts	AISI SS 316, AISI SS 304, Carpenter 42
Seal Elastomer	Viton, EPDM, Silicon, Aflas, PTFE, GFT, Karlez, FEP, TTV
Applications	Slurry pump, Pulp & paper, Sludge & Syrup pump, Chemical, Petrochemical, Refinery, Light Hydrocarbons.
Operating Limits	Shaft Diameter d1 :18....100mm Pressure p : 5....35 bar (max) temperature : -20....+260°C Speed : 3000 r.p.m



DUAL CARTRIDGE SEAL

Face Materials	Carbon, Silicon Carbide, Tungsten Carbide, Lacroloy
Metal Parts	AISI SS 316, AISI SS 304, HASTELLOY-C, ALLOY-20 etc.
Seal Elastomer	Viton, EPDM, Silicon, Aflas, PTFE, GFT, Karlez, FEP, TTV
Applications	Slurry pump, Pulp & paper, Sludge & Syrup pump, Chemical, Petrochemical & Refinery
Operating Limits	Shaft Diameter d1 :18....100mm Pressure p : 05...35 bar (max) temperature : -20.....260°C Speed: 3000 r.p.m





METAL BELLOW CARTRIDGE SEAL

Face Materials	Carbon, Silicon Carbide, Tungsten Carbide.
Metal Parts	AISI SS 316, AISI SS 304, Carpenter 42 Hast- C, Am350, Inconel
Seal Elastomer	Grafoil, Viton, CFT, KARLEZ.
Applications	Chemicals, Petrochemical, Refinery, Corrosive Chemical, Extreme Hot Media.
Operating Limits	Shaft Diameter d1 :25....100mm Pressure p : 25 bar (max) temperature : -70....+350°C Speed: 3000 r.p.m

SLURRY SEAL

Face Materials	Carbon, Silicon Carbide
Metal Parts	SS 316, SS 304
Seal Elastomer	Viton, EPDM, Silicon, Aflas, PTFE, GFT, Karlez, FEP, TTV
Applications	Slurry pump, Pulp & paper, Sludge & Syrup pump, Chemical, Petrochemical & Refinery
Operating Limits	Shaft Diameter d1 :18....100mm Pressure p : 5.....25 bar (max) temperature : -40....+260°C Speed : 3000 r.p.m



DRY RUNNING SEAL

Face Materials	Carbon , Silicon Carbide, Tungsten carbide, Ceramic
Metal Parts	AISI SS 316, AISI SS 304, MS Etc.,
Seal Elastomer	Viton, EPDM, Silicon, Aflas, PTFE, GFT, Karlez, FEP, TTV
Applications	Corrosive Chemicals, General Light Chemicals, Food Product, Pharmaceutical Products.
Operating Limits	Shaft Diameter d1 :15....150mm Pressure p : 08 bar (max) temperature : -30.....150°C Speed: 3000 r.p.m

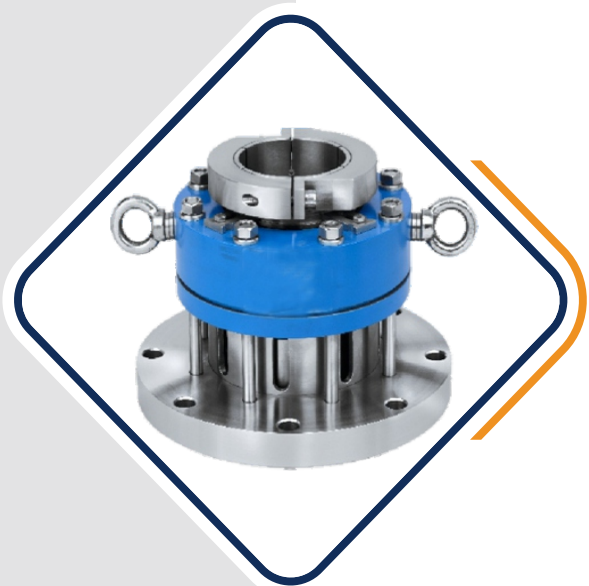
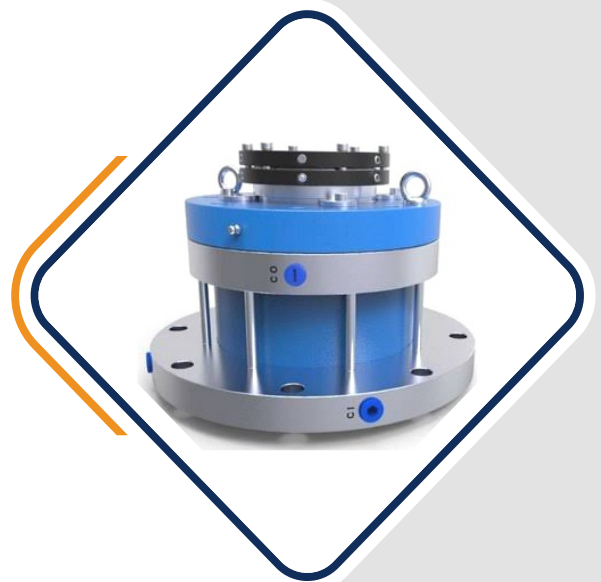


DUAL AGITATOR SEAL

Face Materials	Carbon, Silicon Carbide, Tungsten Carbide, Inconel, Ceramic.
Metal Parts	AISI SS 316, AISI SS 304, HASTELLOY-C, ALLOY-20 etc.
Seal Elastomer	Viton, EPDM, Silicon, Aflas, PTFE, GFT, Karlez, FEP, TTV
Applications	General Chemicals & It's Vapours, Petrochemicals & It's Vapours, Light Hydrocarbons & It's Vapours, Pharmaceutical & Industries, Paper Industries Etc.
Operating Limits	Shaft Diameter d1 :25....200mm Pressure V.....30 bar (max) temperature : -30....+260°C Speed: 3000 r.p.m

SINGLE AGITATOR SEAL

Face Materials	Carbon, Silicon Carbide, Tungsten Carbide, Ceramic
Metal Parts	AISI SS 316, AISI SS 304, HASTELLOY-C, ALLOY-20 etc.
Seal Elastomer	Viton, EPDM, Silicon, Aflas, PTFE, GFT, Karlez, FEP, TTV
Applications	Corrosive Chemical, General light Chemical, Food Products, Pharmaceutical Products
Operating Limits	Shaft Diameter d1 :25....200mm Pressure V.....30 bar (max) temperature : -30....+260°C Speed: 3000 r.p.m



DRY RUNNING SEAL FOR GLASS LINE

Face Materials	Carbon, Silicon Carbide, Ceramic
Metal Parts	SS 316, SS 304
Seal Elastomer	Viton, EPDM, Silicon, Aflas, PTFE, GFT, Karlez, FEP, TTV
Operating Limits	Shaft Diameter d1 : 25....150mm Pressure p : 08 bar (max) temperature : -30.....150°C Speed: 250 r.p.m



THERMOSYPHON VESSEL

Metal Parts	Thermosyphon Shell : Carbon Steel / SS 304 / SS 316 / MS Cooling Coil : SS 304 / SS 316
Operating Limits	20 Pressure Limit : 20 bar 40 Pressure Limit : 40 bar Temperature (max) : 200°C

WAVE SPRING SEAL

Face Materials	Carbon, Ceramic, Silicon Carbide, Tungsten Carbide.
Metal Parts	AISI SS 316, AISI SS 304, HASTELLOY-C, ALLOY-20
Seal Elastomer	Viton, EPDM, TTV, FEP and FKM
Applications	Slurry pump, Pulp & paper, Sludge & Syrup pump, Chemical, Petrochemical & Refinery
Operating Limits	Shaft Diameter d1 :12....70mm Pressure p : 08 bar (max) temperature Upto....+120°C Speed: 3000 r.p.m



SINGLE COIL SPRING SEAL

Face Materials	Carbon, Ceramic, Tungsten Carbide, Silicon Carbide, Lecrolloy
Metal Parts	AISI SS 316, AISI SS 304, HASTELLOY-C, ALLOY-20
Seal Elastomer	Viton, EPDM, Silicon, Aflas, GFT, Karlez, FEP, TTV, PTFE
Applications	Crystallizing Slurry, Suspended Solids Slurry, Saturated Chemical Slurry, General Chemical Slurry
Operating Limits	Shaft Diameter d1 :12....100mm Pressure p : 12 bar (max) temperature : -20....+180°C Speed: 3000 r.p.m





CONICAL COIL SINGLE SPRING SEAL

Face Materials	Carbon, Ceramic, Tungsten Carbide, Silicon Carbide, Lecrolloy
Metal Parts	AISI SS 316, AISI SS 304, HASTELLOY-C, ALLOY-20
Seal Elastomer	Viton, EPDM, Silicon, Aflas, PTFE, GFT, Karlez, FEP, TTV
Applications	Water Pumps, Circulation Pumps for Central heating Chemical Process Pumps, Sewage & Submersible Pumps
Operating Limits	Shaft Diameter d1 :12....90mm Pressure p : 08 bar (max) temperature : -20....+180°C Speed: 3000 r.p.m

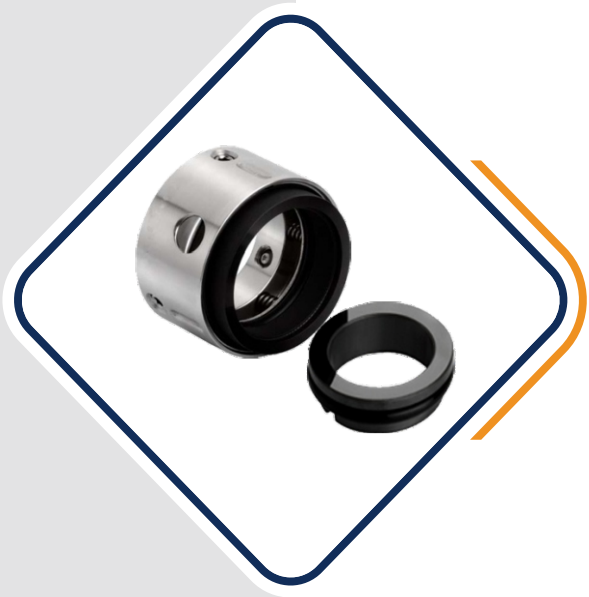
RUBBER BELLOW SEAL

Face Materials	Silicon Carbide, Carbon, Tungsten Carbide, Ceramic
Metal Parts	AISI SS 316, AISI SS 304
Seal Elastomer	Viton, EPDM, NBR
Applications	Water Pumps, Submersible Pumps, Sewage pump
Operating Limits	Shaft Diameter d1 :10....100mm Pressure p : 10 bar (max) temperature : -20....+180°C Speed: 3000 r.p.m



MULTI SPRING SEAL

Face Materials	Carbon, Ceramic, Silicon Carbide, Tungsten Carbide
Metal Parts	AISI SS 316, AISI SS 304, HASTELLOY-C, ALLOY-20
Seal Elastomer	Viton, EPDM, Silicon, Aflas, PTFE, GFT, Karlez, FEP, TTV
Applications	Light Hydrocardons, Corrosive Services, Acids & Alkalies, Petrochemicals etc.
Operating Limits	Shaft Diameter d1 :20....100mm Pressure p : 20 bar (max) temperature : +180°C Speed: 3000 r.p.m





REVERSE BALANCE MULTI SPRING SEAL

Face Materials	Carbon, Ceramic, Silicon Carbide, Tungsten Carbide
Metal Parts	AISI SS 316, AISI SS 304, HASTELLOY-C, ALLOY-20
Seal Elastomer	Viton, EPDM, TTV, FEP and FKM
Applications	Light Hydrocarbons, Corrosive Services, Acids & Alkalies, Petrochemicals etc.
Operating Limits	Shaft Diameter d1 :12....70mm Pressure p : 08 bar (max) temperature Upto....+120°C Speed: 3000 r.p.m

PTFE BELLOW SEAL

Face Materials	GFT, Ceramic, Silicon Carbide, CFT
Metal Parts	AISI SS 316, AISI SS 304, HASTELLOY-C, ALLOY-20
Seal Elastomer	PTFE & GFT
Applications	Extremely Corrosive Services
Operating Limits	Shaft Diameter d1 :18....100mm Pressure p : 06 bar (max) temperature : -30....+120°C Speed: 3000 r.p.m



METAL BELLOW SEAL

Face Materials	Carbon, Silicon Carbide, Tungsten Carbide.
Metal Parts	AISI SS 316, AISI SS 304, Carpenter 42
Seal Elastomer	Flexible Graphite, Viton, CFT.
Applications	Chemicals, Petrochemical, Refinery, Corrosive Chemical, Extreme Hot Media.
Operating Limits	Shaft Diameter d1 :25....100mm Pressure p : 25 bar (max) temperature : -70....+350°C Speed: 3000 r.p.m





SINGLE CARTRIDGE SEAL

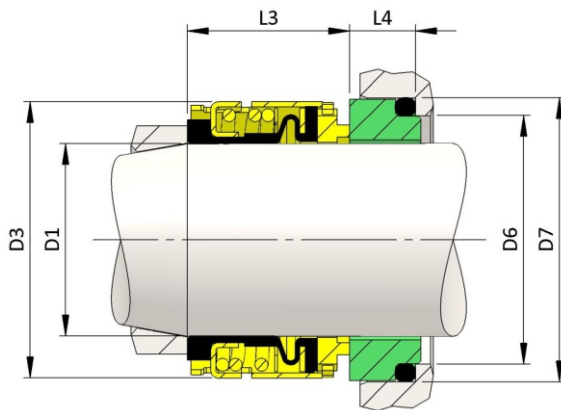
Face Materials	Carbon, Tungsten Carbide, Silicon Carbide
Metal Parts	AISI SS 316, AISI SS 304, Carpenter 42
Seal Elastomer	Viton, EPDM, Silicon, Aflas, PTFE, GFT, Karlez, FEP, TTV
Applications	Slurry pump, Pulp & paper, Sludge & Syrup pump, Chemical, Petrochemical, Refinery, Light Hydrocarbons.
Operating Limits	Shaft Diameter d1 :18....100mm Pressure p : 5.....35 bar (max) temperature : -20....+260°C Speed : 3000 r.p.m

G2 SEAL

General purpose unbalanced seal commonly used in centrifugal pumps as well as other rotating machinery.

Temperature:-30°C to 150°C
Pressure: 4 bar/60 psi
Speed: 13m/sec

Seal Face Material Options:
- Carbon/Ceramic
- Carbon/Silicon Carbide
- Silicon Carbide/Silicon Carbide



D1	D3	D6	D7	L3	L4
14mm	24.0	21.0	25.0	23.0	12.0
16mm	26.0	23.0	27.0	23.0	12.0
18mm	32.0	27.0	33.0	24.0	13.5
20mm	34.0	29.0	35.0	24.0	13.5
22mm	36.0	31.0	37.0	24.0	13.5
24mm	38.0	33.0	39.0	26.7	13.5
25mm	39.0	34.0	40.0	27.0	13.0
28mm	42.0	37.0	43.0	30.0	12.5
30mm	44.0	39.0	45.0	30.5	12.0
32mm	46.0	42.0	48.0	30.5	12.0
33mm	47.0	42.0	48.0	30.5	12.0
35mm	49.0	44.0	50.0	30.5	12.0
38mm	54.0	49.0	56.0	32.0	13.0
40mm	56.0	51.0	58.0	32.0	13.0

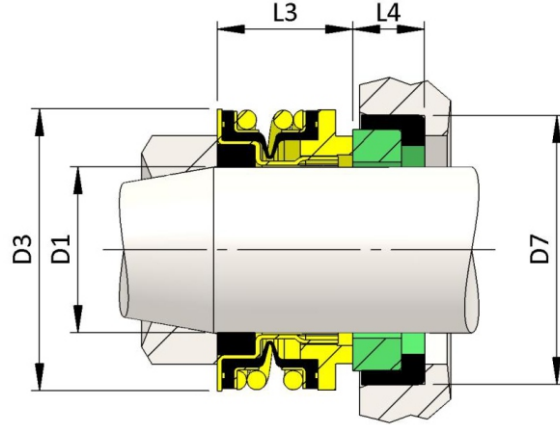
D1	D3	D6	D7	L3	L4
43mm	59.0	54.0	61.0	32.0	13.0
45mm	61.0	56.0	63.0	32.0	13.0
48mm	64.0	59.0	66.0	32.0	13.0
50mm	66.0	62.0	70.0	34.0	13.5
53mm	69.0	65.0	73.0	34.0	13.5
55mm	71.0	67.0	75.0	34.0	13.5
58mm	78.0	70.0	78.0	39.0	13.5
60mm	80.0	72.0	80.0	39.0	13.5
63mm	83.0	75.0	83.0	39.0	13.5
65mm	85.0	77.0	85.0	39.0	13.5
58mm	88.0	81.0	90.0	39.0	13.5
70mm	89.0	83.0	92.0	45.5	14.5
75mm	96.0	88.0	97.0	45.5	14.5
80mm	104.0	95.0	105.0	45.0	15.0

T16 SEAL

General purpose unbalanced seal commonly used in centrifugal pumps as well as other rotating machinery.

Temperature: -30°C to 100°C
 Pressure: 7 bar/105 psi
 Speed: 5m/sec

Seal Face Material Options:
 - Carbon/Ceramic
 - Carbon/Silicon Carbide
 - Silicon Carbide/Silicon Carbide



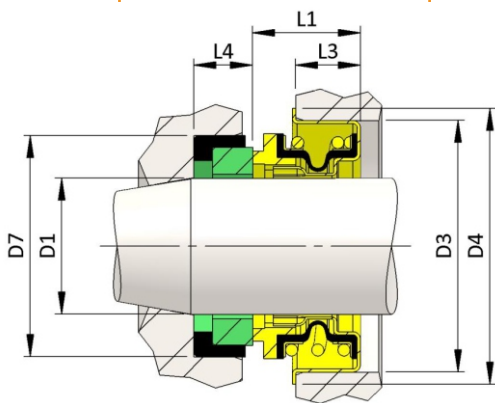
D1	D3	D7	L3	L4
0.375"	24.0	22.2	16.7	6.3
0.500"	27.0	25.4	18.3	8.0
0.625"	31.0	31.8	18.3	10.3
0.750"	34.0	34.9	18.3	10.3
1.000"	43.0	41.3	20.7	11.0

T68 SEAL

General purpose unbalanced seal commonly used in automotive applications.

Temperature: -30°C to 100°C
 Pressure: 5 bar/105 psi
 Speed: 5m/sec

Seal Face Material Options:
 - Carbon/Ceramic
 - Carbon/Silicon Carbide



D1	D3	D4	D7	L1	L3	L4
0.500"	28.5	31.7	25.0	10.2	8.0	5.0
0.625"	36.5	41.3	31.0	11.8	8.0	5.0
0.750"	40.0	43.7	35.0	11.0	9.5	5.0
1.000"	47.0	51.0	41.3	19.0	12.0	11.0
1.125"	52.0	57.0	48.0	16.0	11.0	8.5

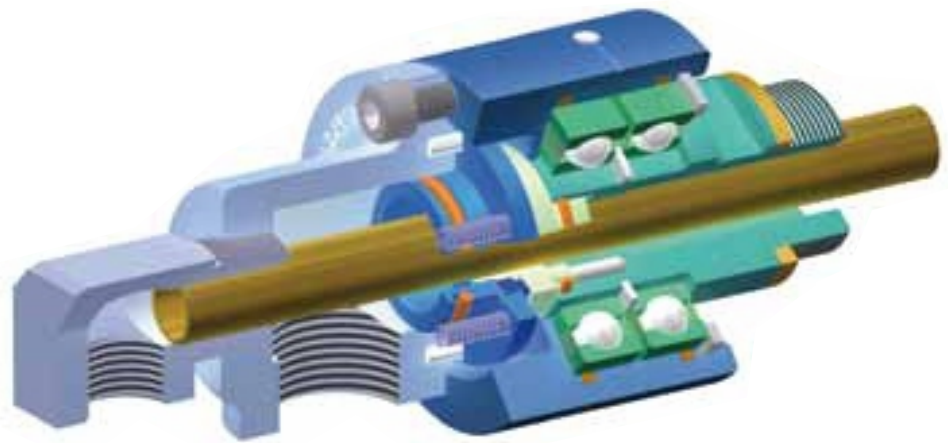


ALL TYPES OF ROTARY JOINT, ROTARY UNION & ROTO SEAL COUPLINGS.



ROTARY JOINT FOR WATER APPLICATION

Face Materials	Carbon, Silicon Carbide, Tungsten Carbide, Stelite
Metal Parts	SS 316, SS 304, Brass
Seal Elastomer	Viton, Silicon, TTV, PTFE.
Operating Limits	SIZE : 3/8" To 6.0" Pressure : 15 Bar temperature : 150° C Speed: 3500 RPM



ROTARY JOINT FOR AIRAPPLICATION

Face Materials	Carbon, Silicon Carbide, Tungsten Carbide, Stelite,
Metal Parts	Aluminium
Seal Elastomer	Viton, PTFE.
Operating Limits	SIZE : 3/8" To 6.0" Pressure : 10 Bar Air, 0.07 Bar to 7 Kpa Vacuum Temperature : 150° C Speed: 2800 RPM

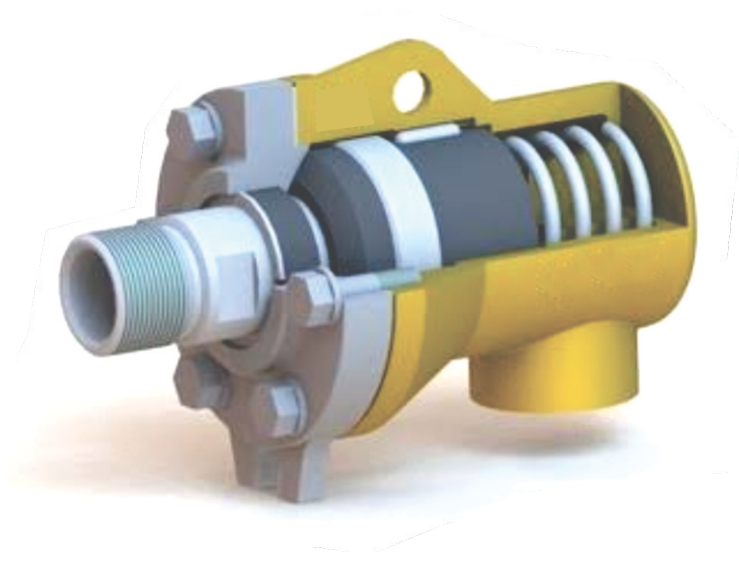


ALL TYPES OF ROTARY JOINT, ROTARY UNION & ROTO SEAL COUPLINGS.



ROTARY JOINT FOR HOT OIL & THERMIC FLUID

Face Materials	Antimony Carbon.
Metal Parts	MS, SS 304
Seal Elastomer	Grafoil Gasket, Asbestos Gasket.
Operating Limits	SIZE : 0.5" to 6.0" Pressure : 07 Bar Temperature : 350° C Speed: 750 RPM



HYDRAULIC ROTARY JOINT

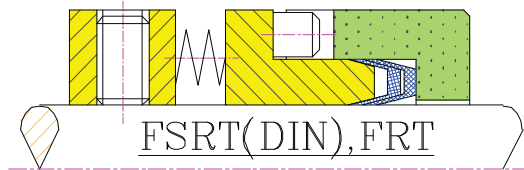
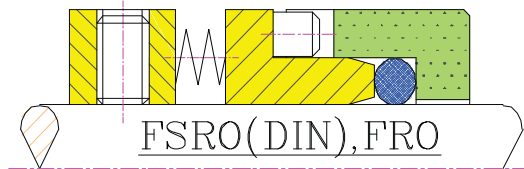
Face Materials	Carbon, Silicon Carbide.
Metal Parts	SS 316, SS 304, Brass, Gun Metal.
Seal Elastomer	Viton, PTFE.
Operating Limits	SIZE : 3/8" To 6.0" Pressure : 400 Bar temperature : 150° C Speed: 1500 RPM



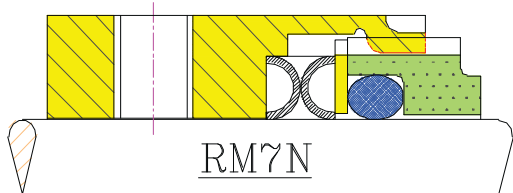
COMPONENT DEALS - SINGLE PUSHER



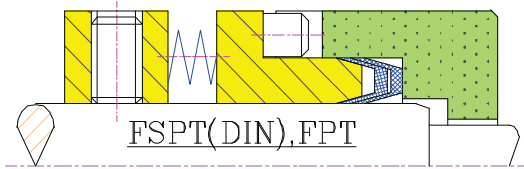
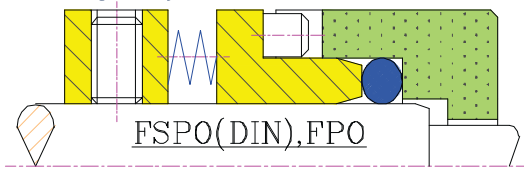
Multi Spring, Inside Mounted, Unbalanced
 Size: 16mm to 115mm / 0.375" to 4.500"
 Pressure: 10 Kg/Sq.Cm (Max.) Temperature: -23 to 200° C
 Water Solvents, General Chemicals, Clear Liquids.



Wave Spring, Inside Mounted, Unbalanced
 Size: 14mm to 200mm
 Pressure: 10 Kg/Sq.Cm (Max.) Temperature: -50 to 200° C
 Water Solvents, General Chemicals, Clear Liquids.



Multi Spring, Inside Mounted, Balanced
 Size: 16mm to 115mm / 0.375" to 4.500"
 Pressure: 40 Kg/Sq.Cm (Max.) Temperature: -23 to 200° C
 Petro Chemicals, General Chemicals,
 Clear Liquids, Light HydroCarbons.



PUMP SLEEVE



Material :
SUS304, SUS316 and
Special Corrosion Resistant Metal

PUMP SLEEVE



In Tungsten Carbide Material,
With Thread Connection.
Used in Jet Bit

RUBBER COMPONENTS

O RINGS



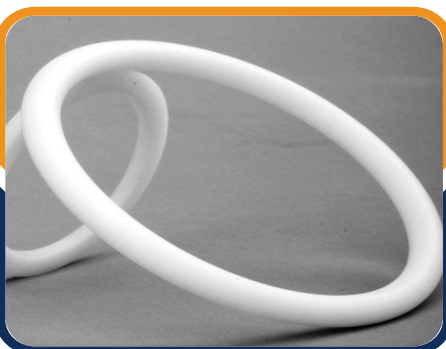
O RING CORD



TTV ORING



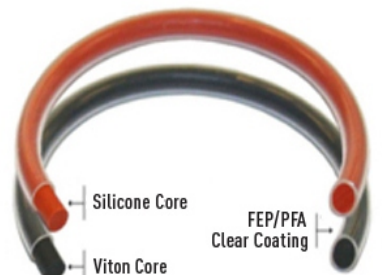
PTFE ORING



OIL SEAL



FEP ORING





GERMANN ENGINEERING

 **Noman** : 77387 75927

 **Faizan** : 81048 25160

 infogermannengineering@gmail.com

 Gala No.02, Lower Floor, Opposite Mahada Colony, Bhawal Singh Compound,
S.V. Road, Jogeshwari West, Mumbai - 400102, Maharashtra, INDIA.